

iTED

Deliver What You Promise With IMPACT



Treatment Brochure

Stretch Marks

Skin Whitening

Scars

Skin Rejuvenation

Melasma

Acne Scars

**Alma** Lasers™  
Wellbeing Through Technology



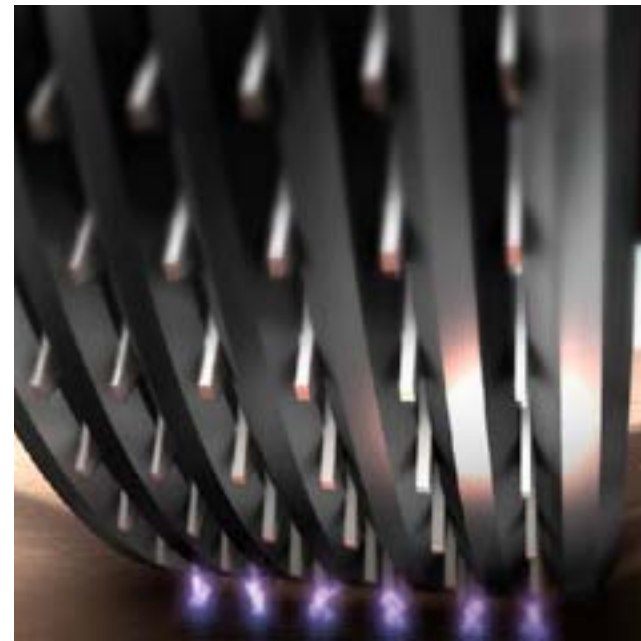
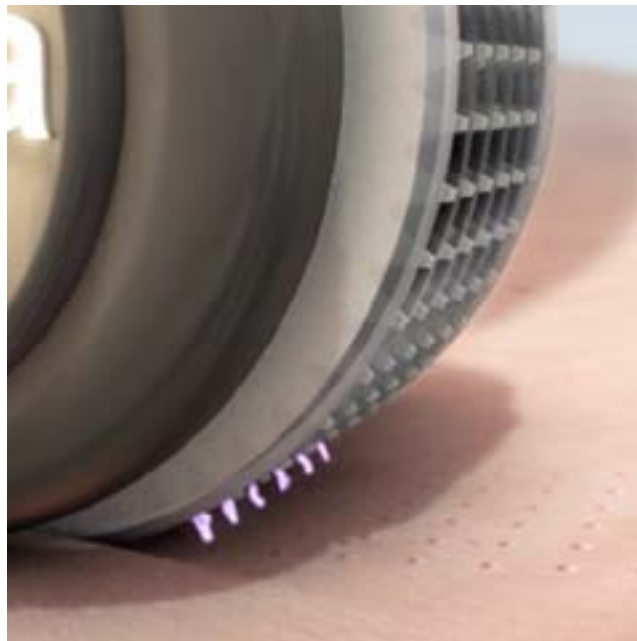
## iTED by Alma Lasers

Deliver What You Promise With IMPACT

iTED is a minimally invasive skin barrier breakthrough solution that offers unprecedented potential for skin repair and aesthetic enhancement. It is the synergy of three distinct technologies, brought together to provide patients with a quick, easy and virtually pain-free answer to their most difficult skin problems.

iTED begins with microperforation of the skin using an iPixel module, followed by the application of compounds. The IMPACT module emits acoustic pressure that forces the ProfoundPixel topical compounds to the sub-epidermal tissue for effective skin repair and improvement.

iTED is the result of many years of research and development, as well as extensive collaboration with dermatologists, hospitals, scientists and universities across the globe. Multiple clinical studies and extensive laboratory testing has proven both the ability of the IMPACT module to deliver complex compounds deep beyond the skin barrier, and positive change in skin appearance following iTED treatment.



# iPixel

Pixel Outside the Box

iPixel perforates the skin, creating micro-channels which reach beyond the stratum corneum, and creating a direct path for the ProfoundPixel Smart Messengers to reach the deeper skin tissue.

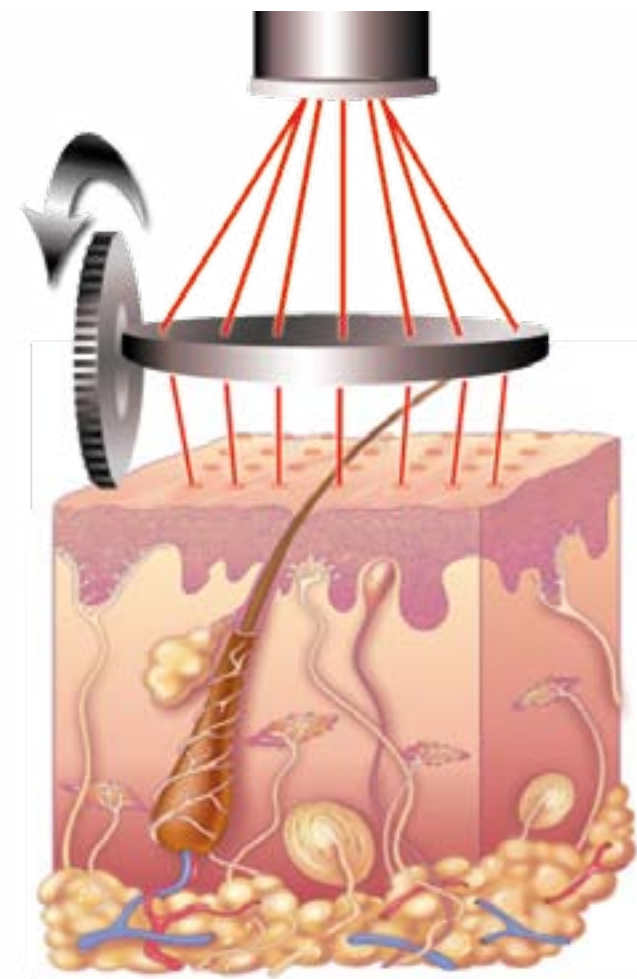
iPixel enables doctors and aesthetic practitioners to obtain continuous and symmetrical fractional ablation and deep thermal heating of the skin, using an innovative new method that eliminates the need for stamping and scanning. Available with either an Erbium or CO<sub>2</sub> laser or RF plasma technology, iPixel rolls across the skin, delivering laser or electromagnetic pulses that are triggered as a function of distance traveled, regardless of treatment speed.

Depth of ablation varies with energy output and can reach up to several hundred microns, while the controlled spacing between pixels minimizes the treatment area, thereby strengthening collagen as well as reducing patient down time.

## Other Clinical Benefits

The iPixel module offers enhanced clinical benefits for you and your patients.

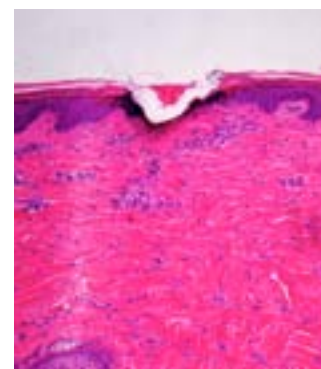
- Greater thermal and ablative effect
- Enhanced treatment results
- Works on all skin types
- Safe for use all year round



## iPixel Module

The iPixel module creates multiple controlled micro-channels within a local thermal injury zone, enabling active agents to penetrate the skin barrier.

Crater caused by the ablative effect of a single Pixel<sup>RF</sup> spike at 45 Watt



Histology Courtesy:  
Prof. Arie Orenstein, MD,  
Chairman of Plastic Surgery  
Department, Advanced  
Technology Center, Sheba  
Medical Center



## profOundPixel

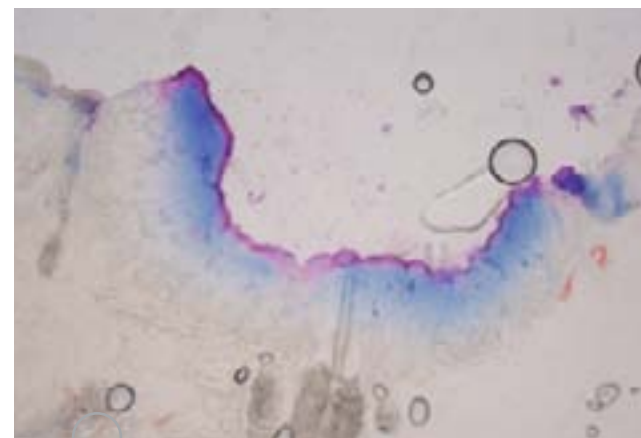
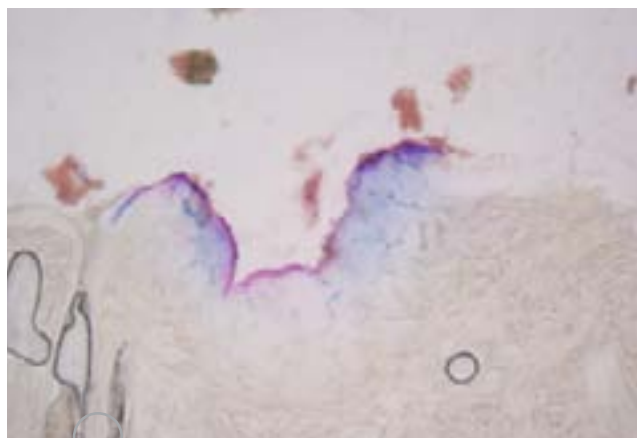
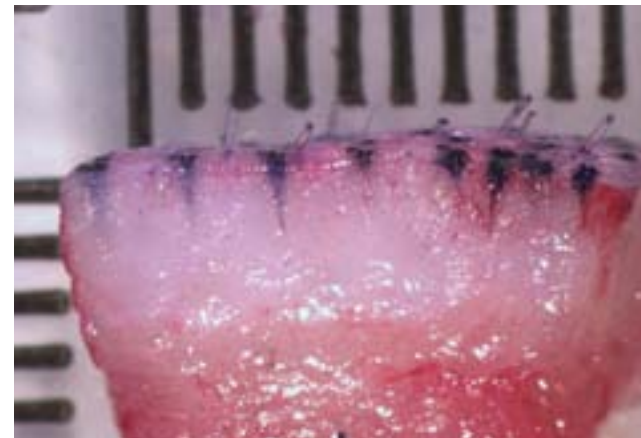
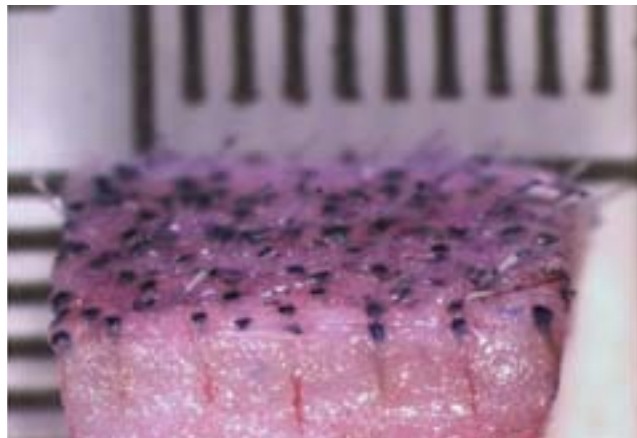
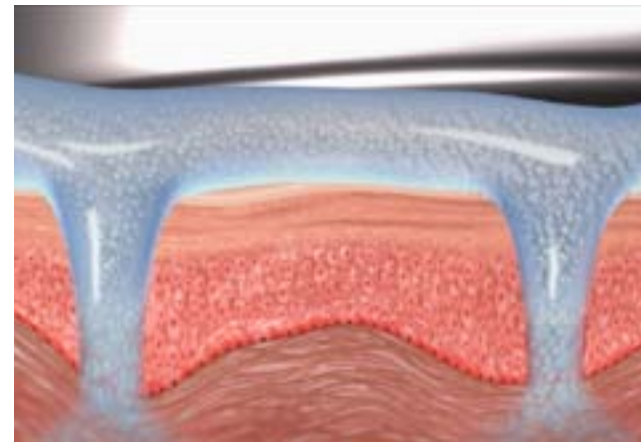
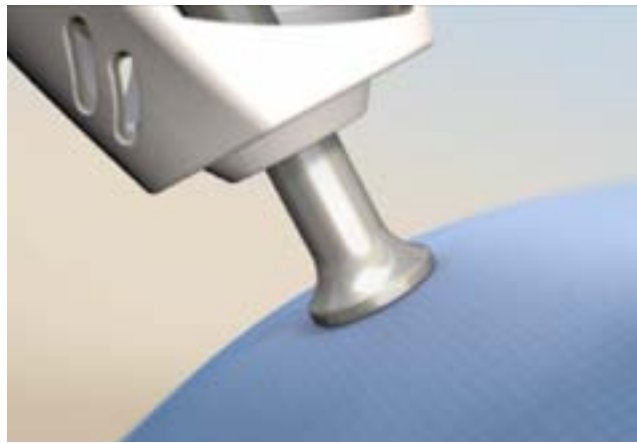
Our unique approach to skin repair allows you to provide an experience that is prescribed exclusively for your patient's skin.

### **Four unique ProfoundPixel formulas have been developed**

- Skin Whitening
- Stretch Marks
- Scars
- Skin Rejuvenation

### **iTED Treatment**

ProfoundPixel topical formulas are applied to the skin during treatment. The active ingredients found in the topical formulas penetrate the sub-epidermal tissue via the iPixel induced micro-channels, preventing and reversing major clinical manifestations of skin damage and encouraging positive aesthetic changes.



20X  
Evans blue dye remains on the skin surface  
After iPixelRF, without IMPACT treatment.

20X  
Evans blue dye has reached the deeper  
skin tissue after IMPACT treatment.

## IMPACT Technology

Perforation of the skin and application of cosmeceuticals has been found to be ineffective as a means for trans-epidermal delivery, as the same perforation which acts as a passage for the cosmeceuticals to the deeper skin tissue, also causes the release of intra-cellular fluid which rise up in the micro-channels and clog the passage for active ingredients.

IMPACT technology was designed to overcome this challenge, and offer the first fully effective trans-epidermal delivery solution.

### Impact Sonotrode

The IMPACT module is a sonotrode that emits acoustic waves and air pressure which advance the ProfoundPixel topical compounds through the micro-channels, creating a **push and pull** effect within the channels to release the buildup of intra-cellular fluid and deliver the active ingredients to the targeted tissue depth.

Histologies performed after the use of IMPACT technology have proven efficacy in advancing active ingredients to the deeper layers of the skin.





Pixel CO<sub>2</sub>

Accent Ultra V

Legato

Harmony<sup>XL</sup>

## Systems

iTED can be performed with several Alma Lasers medical aesthetic systems that combine IMPACT technology with an iPixel method for fractional ablation.

### Legato

Legato is the first dedicated iTED system. Legato combines iPixelRF and IMPACT technology, and is the ideal system for doctors seeking a relatively simple entry into the possibilities of iTED.

### Pixel CO<sub>2</sub>

Pixel CO<sub>2</sub> boasts the most powerful and advanced CO<sub>2</sub> laser with the iPixelCO<sub>2</sub> handpiece. The iPixel CO<sub>2</sub> channels a 70W laser into a single line of seven laser spots that is released every millimeter, leaving a symmetrical pattern of fractional ablation across the skin.

Pixel CO<sub>2</sub> is the ideal system for doctors, plastic surgeons and hospitals that are seeking the strength of a CO<sub>2</sub> laser, with the added value of performing iTED procedures.

### Accent Ultra V

Accent Ultra V boasts the leading technology for noninvasive body and facial contouring. Accent Ultra V integrates Alma Lasers proprietary shear waves and UniPolar technology into one non-invasive procedure to achieve superior results for the treatment of hard-to-remove fat & cellulite, to tighten skin, and to beautifully contour the body and face. The Accent Ultra V can be applied to the iTED procedure by using the iPixelRF and IMPACT modules.

Accent Ultra V is the ideal system for doctors who seek to offer a wide array of medical aesthetic procedures, with a focus on body and facial contouring.

### Harmony<sup>XL</sup>

Harmony<sup>XL</sup> is the world's most sold multi-application platform for aesthetic treatments. Offering 13 distinct laser, ultrasound and light technologies, and 28 different handpiece modules, Harmony<sup>XL</sup> supports the iPixelEr, a high powered and super-fast 7X1 pixel scanner. Harmony<sup>XL</sup> is the most comprehensive aesthetic platform for dermatologists and aesthetic practitioners available today.

## Clinical Results

iTED clinical studies have been carried out at sites across the globe.



**Scars (Legato)** Dr. Igor Pinson, MD & PhD, Dermatologist, Moscow, Russia



**Scars (Legato)** Courtesy of Dr. Tania Aparecida Meneghel, Dermatologist, Clínica Renaissance, São Paulo, Brazil



**Acne Scars (Pixel CO<sub>2</sub>)** Courtesy of Dr. Maria Claudia Issa, MD & PhD, Dermatologist, Rio de Janeiro, Brazil



**Acne Scars (Legato)** Courtesy of Dr. Maria Claudia Issa, MD & PhD, Dermatologist, Rio de Janeiro, Brazil



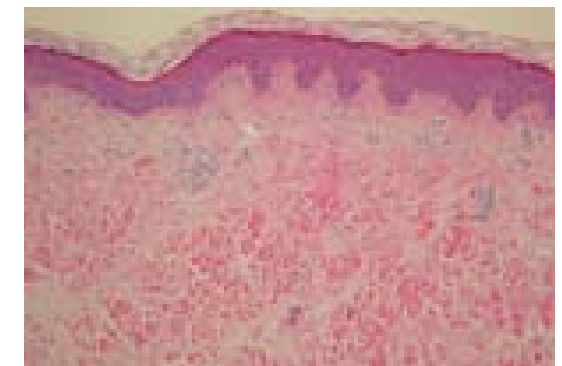
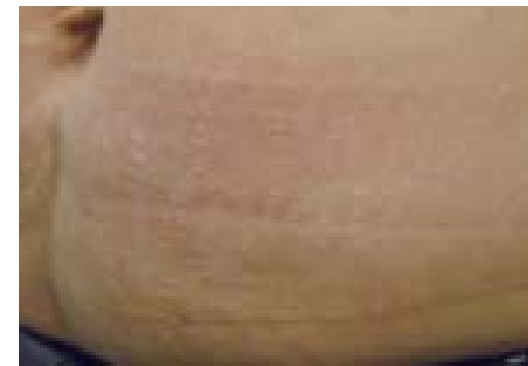
**Melasma (Pixel CO<sub>2</sub>)** Courtesy of Dr. Michael Shohat, Dermatologist



**Skin Rejuvenation (Legato)** Courtesy of Maria Angelo-Khattar, PhD, Aesthetica Clinic, Dubai



Histologies show increased collagen fibers in the dermis and increased elastic fibers.



**Strea (Legato)** Courtesy of Dong-Hye Suh, Dermatology, Arumdaun Nara Dermatologic Clinic, Korea

## Listen to the Experts



### **Michael H. Gold, MD**

Medical Director, Gold Skin Care Center, Nashville, TN, USA

"iTED and IMPACT technology solves the challenges of trans-epidermal delivery by applying reverse pressure within the micro-channels, overcoming the blockage of intra-cellular fluid and forcing the active agents through. It is among the most important breakthroughs in aesthetic technology."



### **Maria Claudia Issa, MD & PhD**

Clinica Dermavance Dermatologia, Rio de Janeiro, Brazil

"I strongly believe that the Legato, iPixel<sup>RF</sup> and IMPACT offer treatment possibilities which are not obtainable using any other devices."



### **Uwe Paasch, MD, PhD**

University Clinic of Leipzig, Germany

"Clinical results of the combined iPixel<sup>RF</sup> and IMPACT treatment have been very impressive. The IMPACT module is able to pass large amounts of topical creams beyond the skin barrier to levels not previously obtainable. The result of which is improved treatment outcomes and new treatment possibilities."



### **Maria Angelo-Khattar, PhD**

Director Aesthetica Clinic, Dubai

"iTED really helps you deliver what you promise to the patient.... IMPACT and Alma Lasers iTED concept are the future of skin repair."



### **Dong-Hye Suh, MD, Dermatologist**

Arumdaun Nara Dermatologic Clinic, Korea

"In darker skinned Asian patients, the synergies present in iTED using fractional ablative RF and ultrasound treatment is effective with fewer side effects."



### **Tania Aparecida Meneghel, MD, Dermatologist**

Clínica Renaissance, São Paulo, Brazil

"I have been very impressed by the use of IMPACT as a method of delivering cosmeceuticals to the dermis. I am not aware of any other method or technology. This is real innovation."



Alma Lasers is the leading supplier of innovative medical aesthetic technologies. Alma Lasers is recognized by industry practitioners for its whole-hearted commitment to providing complete solutions to professional practices. Alma Lasers offers innovative technologies, dependable equipment, knowledgeable sales staff and years of industry expertise. We seek the creation of a strong and lasting relationship with our doctors and aesthetic clinics based on trust and a genuine desire for the success of the practice.



© 2012 Alma Lasers, Ltd. All rights reserved. Alma Lasers Ltd., its logo, Accent<sup>®XL</sup>, Soprano<sup>®XL</sup>, Harmony<sup>®XL</sup>, Legato, iPixel<sup>®RF</sup>, Impact, Pixel<sup>®</sup>, Laser360<sup>™</sup>, Accent Your Body<sup>™</sup>, Pain-Free, Hair-Free<sup>™</sup>, Pixel Perfect<sup>™</sup> and IN-Motion<sup>™</sup> are trademarks or registered trademarks of Alma Lasers, Ltd. Product specifications are subject to change without notice.

[www.almalasers.com](http://www.almalasers.com)

Connect with Alma Lasers



**US Headquarters**

485 Half Day Road  
Suite 100  
Buffalo Grove, IL 60089  
**Tel** +1-224-377-2000  
**Fax** +1-224-377-2050  
[marketing@almalasers.com](mailto:marketing@almalasers.com)

**International Headquarters**

14 Halamish Street  
Caesarea Industrial Park  
Caesarea, Israel 38900  
**Tel** +972-4-627-5357  
**Fax** +972-4-627-5368  
[info@almalasers.com](mailto:info@almalasers.com)